

# COLLECTIVE

## Satellites Programme



Catrin Jeans

*Recreationally Surviving - The Great Outside*

08.02.14 – 16.03.14

**Satellites Programme**  
**Catrin Jeans**  
***Recreationally Surviving –***  
***The Great Outside***

08.02.14 – 16.03.14

Collective is pleased to present the first Satellites Programme exhibition of 2014 by artist Catrin Jeans.

Catrin's work is informed by research around contemporary leisure activities, often taking the form of participatory performance, where Catrin acts as a host, initiating various sports and recreational activities with groups of people. Recent works have included a 24-hour game of football, a keep-fit workout and an art crawl led by Catrin in the guise of a 'Club 18-30 rep'.

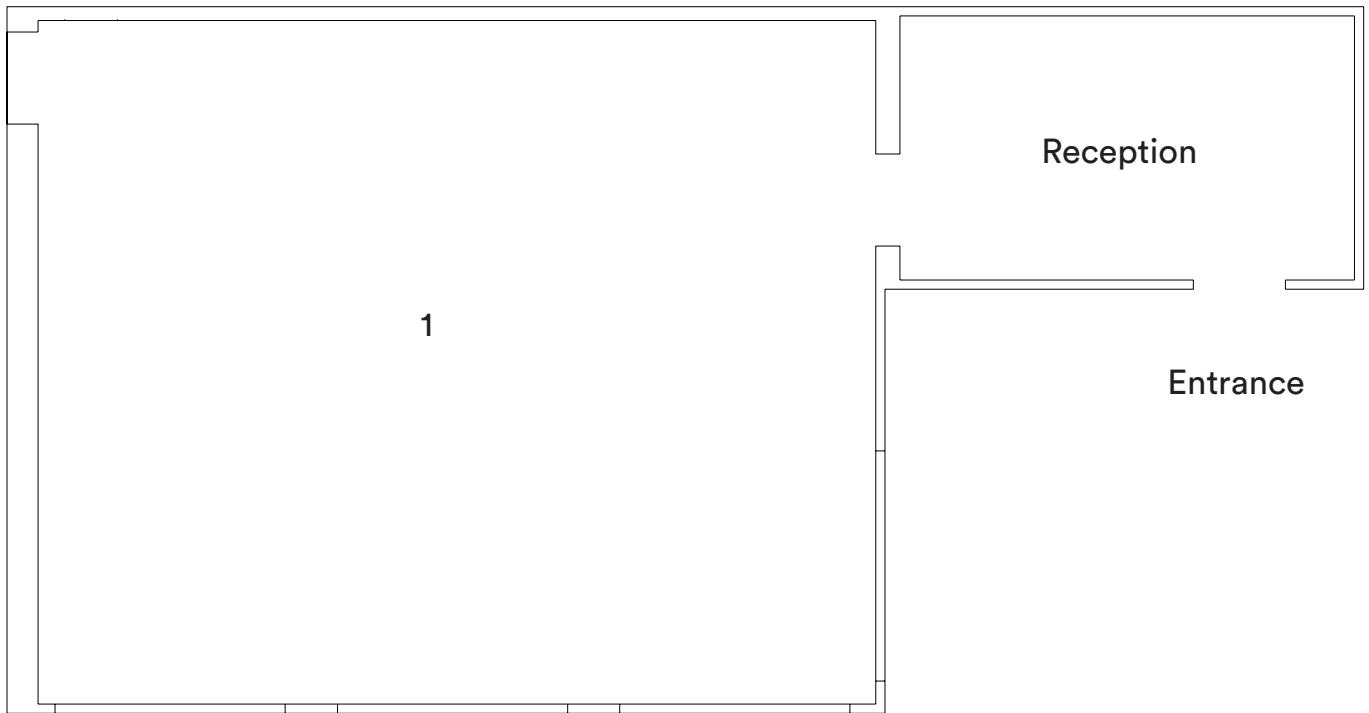
For Collective, Catrin has created a new installation and performance titled *Recreationally Surviving – The Great Outside*. This playful installation consists of a diorama-like scene of a staged wilderness displayed alongside a survival kit. Catrin made the kit through a series of workshops with a group in Huntly, and it includes examples of paraphernalia that could be used in outdoor pursuits such as: hiking, fishing, camouflage and animal tracking. The kit alludes to tools that would be made and used on bushcraft courses, tools that have their roots in traditional survival skills but are now more commonly used by urbanite, weekend trekkers. The exhibition explores this change in perception, how so-called 'traditional' or 'survival' skills have been adopted for leisure entertainment and weekend escapism.

The installation can also be used as a backdrop for visitors to take their own photographs, amidst props that include hilltop heather, a remote landscape scene and a campfire. The installation offers an alternative option for tourist snaps to the many monuments on Calton Hill. If you would like to, place yourself in the scene. Please share your photos on twitter using #RecreationallySurviving.

In the information panels describing the survival kit, Catrin has adopted the persona of a 'wilderness activity leader'. This character is inspired by presenters from survival and adventure television programmes, including Muriel Gray who presented a show on Munro-bagging in the early 1990s, providing tips and advice for those eager to explore the peaks of Scotland, and Bear Grylls, the contemporary survival celebrity known for his series *Born Survivor*. The information panels instruct how the objects are best used, providing helpful information about the kit and describing how each object ensures you make the most of your weekend retreat.

Catrin has devised a new performance that also uses this persona of a wilderness activity leader which will be performed on the opening night of *Recreationally Surviving – The Great Outside*. In the performance Catrin will instruct visitors on how to escape and endure hardships within this temporary and rugged landscape so that they can obtain maximum satisfaction from their leisure time.

## Floor Plan



### 1. *Recreationally Surviving – The Great Outside*, 2013, installation

With thanks to the Huntly Brownies and their Brown Owls, Deveron Arts team and Tom Carlile

**Catrin Jeans** lives and works in Huntly, Scotland. Since graduating from Duncan of Jordanstone College of Art & Design, Dundee in 2008 Catrin has created events and performances for the Scottish National Gallery of Modern Art, The Royal Standard at the Liverpool Biennial and GENERATORprojects, Dundee. Catrin is currently Cultural Health Visitor for Deveron Arts.

This exhibition is part of Satellites Programme, Collective's development programme for emergent artists based in Scotland. Satellites Programme includes five solo presentations by selected Scotland based, emergent artists and two projects developed by interns. The programme has developed out of New Work Scotland Programme to facilitate artists at this pivotal point in their career through peer review, professional development, mentoring, exhibitions and events. The 2014 Satellites Programme artists and interns are Marie-Michelle Deschamps, Kathryn Elkin, Catrin Jeans, Collete Rayner, Matthew Richardson, Dane Sutherland, and Laura Yuile.

**Collective** is a contemporary, visual arts organisation established in 1984. Collective delivers an exciting and ambitious programme of exhibitions, new commissions, events and off-site projects. Collective produces major new work by Scotland based and international artists who are at a pivotal stage in their development.

Over the next two years, Collective will be making the City Observatory complex its new home, opening the whole site to the public for the first time. This will bring contemporary visual art into the iconic heart of Edinburgh.



ALBA | CHRUTHACHAIL

• EDINBURGH •  
THE CITY OF EDINBURGH COUNCIL